


Foot abduction orthosis accessory for post-treatment of idiopathic clubfoot based on the conservative treatment method by Dr Ponseti.
For use on very small or premature babies as a particularly short, lightweight middle piece for specific foot abduction bars.



Important information:

Included in delivery: 1x Sameda Mini Steg, Short Bar

Accessory for: ALFA-Flex Light Brace Foot Abduction Brace
BETA-Flex Brace Foot Abduction Brace

Date of manufacture: For product/packaging with this symbol: 

Service life: 8 years

Tool: Allen key/Torx key
(supplied with foot abduction bar)

Storage: Protected from frost, light and excess humidity

Cleaning: Use a damp cloth only, no corrosive cleaning products!

How to use:

The accessory is used as a middle piece in the foot abduction bar. The foot abduction bar is used as a system in foot abduction orthosis with the corresponding foot clips and additional accessories if required.

All screws must be secured using threadlockers when assembling the foot abduction bar!

Please note:

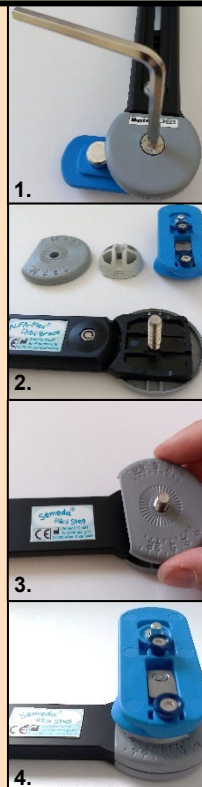
For the Sameda Mini Steg, Short Bar, consult the **Sameda instruction manual with identification number: TL 30nn-002**

(nn =Placeholder for numeric code in different languages)

For use with the ALFA-Flex Light Brace*:

1. First, loosen the screw on one side only of the lower support of the ALFA-Flex Light Brace foot abduction bar. Use the tool supplied with the bar: Allen key (SW 4). Be sure not to lose any individual parts.
2. Carefully turn over the bar. Remove the upper support, oval piece and shoe feeder plate. Pay special attention to the pressure piece with internal thread in the shoe feeder plate.
3. Place the Sameda Mini Steg, Short Bar with the drill hole on the end of the brace onto the screw of the lower support. The upper part of the bar features a brightly coloured product label, which should face upwards. Attach the upper support, followed by the oval piece and shoe feeder plate to the screw. Compare the alignment of each part with the original setup on the other side of the ALFA-Flex Light Brace and figure 4. Ensure that the pressure piece is positioned correctly.
4. Secure the screws using threadlockers. Tighten the screw on the lower support. Repeat steps 1-3 for the other side.

*Colour shown in the photo does not reflect the original product



For use with the BETA-Flex Brace::

1. Loosen the two screws on the rotor casing of the BETA-Flex Brace foot abduction bar by two full turns. Use the tool supplied with the bar: T10 Torx key.
2. Pull out the rotor casing from underneath, leaving a slight gap. Remove the bar from the rotor casing. Repeat steps 1 and 2 for the second rotor casing. The foot abduction bar is now separated into 3 individual parts.
3. Insert the Sameda Mini Steg, Short Bar, into the rotor casing. The upper part of the bar features a brightly coloured product label. Insert the bar into the rotor casing so that the shoe feeder plates and bar are positioned as shown in figure 3. Push the rotor casings back together to close the gap around the bar.
4. Check that the rotor casing is properly closed around the inserted Sameda Mini Steg, Short Bar. Secure the screws using threadlockers. Tighten both screws on the rotor casings by two full turns using the T10 Torx key.

